



datainnovations.com

Next Generation Hematology Workcell

Paperless automated results processing



Agenda

1 Next Generation Hematology Workcell

2 Hematology Workcell Demonstration

3 Questions

Agenda

1 Next Generation Hematology Workcell

2 Hematology Workcell Demonstration

3 Questions

Next Generation Hematology WorkCell

Available on Instrument Manager v8.12 or greater

- Holistic, automated, paperless Hematology WorkCell
 - Providing a vendor-neutral, that supports all major Hematology-instrument vendors
 - Support for multiple facilities of all sizes
 - New functions specifically for Hematology workflow including new screen functions
 - Minimized key strokes to release part or all the results
 - Secondary review to provide Pathologist or senior tech remote review capabilities.
 - Combined with autoverification rules provides one of the most advanced, automated Hematology WorkCell

Enhanced SM Workspace Functionality

Two new Workspaces have been added

- Results Review/Edit/Release - Run
 - New data presentation format
 - includes the new Run Worksheet pane, along with the Specimen Worksheet pane, and the Patient Information pane
- Hematology Workspace
 - Enhances hematology workflow
 - includes the new Run Worksheet pane integrated with the Specimen Worksheet & the Specimen Information panes
 - both the Cell Counter and Images panes are tabbed for easy access
 - tighter integration of Cell Counter with instrument runs

Enhanced SM Workspace Functionality

Hematology Worksheet

Instrument Manager by Data Innovations, LLC - [Specimen Management Workspace - A-HEMATOLOGY WORKSPACE (Modified)]

System Configuration Diagnostics Security Specimen Management SSR DC SR MM MA Reports Window Help

Workspace Edit View Format Action Help

A-HEMATOLOGY WORKSPACE Off

Audit Trail... Specimen Event Log... Specimen Tracking...

Images

Specimen Worksheet

Priority	Specimen ID	Patient Name	Specimen C
S	A123792	Rouleau, Steve	Tests Held
R	A123789	Debby, Smith	Tests Held
R	A123790	Lisa, Szetela	Tests Held
S	A123791	Duval, Cheryl	Tests Held
R	A123793	Goupil, Benoit	Tests Held
R	A123794	Gosselin, Michelle	Tests Held
S	A123795	Polvin, Pete	Tests Held
S	A123796	Dione, Janice	Tests Held
R	A123797	Leonard, Daniel	Tests Held
R	A123798	Zito, Frank	Tests Held

Specimen Information

Patient Name: Lisa, Szetela Sex:
 Patient ID: P10002 Date of Birth:
 Specimen ID: A123790 Patient Comment:
 Operator ID:
 Admitting Physician:
 Rack: Sequence Number:
 Position:
 Specimen Comment(s):

Run Worksheet

Test...	Result (1)	Referenc...	Result Date...	Units (1)	Test Inst...	Error Name(s) (1)	Test Co...	Result (2)	Referenc...	Result Date/...	Units (2)	Test I...	Error Name(s...
4 - CBC													
WBC	0.5	4.8 - 10.8	4/4/2013 11:49:43 AM	x10 ³ /ul	HEME INST	<<<<L,Critical Result,Path Review Required,Slide Review Required	Critical Value, Results called to	0.6	4.8 - 10.8	4/4/2013 11:50:13 AM	x10 ³ /ul	HEME INST	<<<<L,Critical Result,Path Review Required,Slide
RBC	5	4.4 - 5.9	4/4/2013 11:49:43 AM	x10 ⁶ /ul	HEME INST			5.04	4.4 - 5.9	4/4/2013 11:50:13 AM	x10 ⁶ /ul	HEME INST	
HGB	8	13.5 - 17.5	4/4/2013 11:49:43 AM	G/DL	HEME INST	L,Critical Result,H&H Failed	Critical Value, Results called to	9	13.5 - 17.5	4/4/2013 11:50:13 AM	G/DL	HEME INST	L,H&H Failed
HCT	35	34.9 - 46.9	4/4/2013 11:49:43 AM	%	HEME INST	H&H Failed		36	34.9 - 46.9	4/4/2013 11:50:13 AM	%	HEME INST	H&H Failed
MCV	85.6	81 - 100	4/4/2013 11:49:43 AM	FL	HEME INST			85.4	81 - 100	4/4/2013 11:50:13 AM	FL	HEME INST	
MCH	26.4	27 - 34	4/4/2013 11:49:43 AM	PG	HEME INST	L		26.4	27 - 34	4/4/2013 11:50:13 AM	PG	HEME INST	L
MCHC	30.9	32 - 36	4/4/2013 11:49:43 AM	G/DL	HEME INST	L		30.9	32 - 36	4/4/2013 11:50:13 AM	G/DL	HEME INST	L
RDW	11.4	11.6 - 13.7	4/4/2013 11:49:43 AM	%	HEME INST	L		11.4	11.6 - 13.7	4/4/2013 11:50:13 AM	%	HEME INST	L
PLT	35	150 - 350	4/4/2013 11:49:43 AM	x10 ³ /uL	HEME INST	L,Critical Result,Path Review Required,Slide Review Required	Critical Value, Results called to	35	150 - 350	4/4/2013 11:50:13 AM	x10 ³ /uL	HEME INST	L,Critical Result,Path Review Required,Slide
MPV	10.6		4/4/2013 11:49:43 AM	FL	HEME INST			10.6		4/4/2013 11:50:13 AM	FL	HEME INST	
PCT	0.202		4/4/2013 11:49:43 AM	#	HEME INST			0.202		4/4/2013 11:50:13 AM	#	HEME INST	
PDW	15.3		4/4/2013 11:49:43 AM	%	HEME INST			15.3		4/4/2013 11:50:13 AM	%	HEME INST	

Cell Counter

Send Data Through System

Save Run Data to SM Clear All Data

Disable Cell Counter Keys

HEME CELL COUNTER

Specimen Information

Specimen ID: A123790 WBC count:
 Instrument ID: MANDIFF Total Num:

Test Code	Result	%	Absolut
Morphology Review			
PMORPH	Result Req...		
RMORPH	Result Req...		
Hematology Analyzer			
Instrument ID	MANDIFF		
Hold for Path Review			
Pathologist Review	N		
White Blood Cell			
BAND		0.0%	0.00
NEUT		0.0%	0.00
LYMPH		0.0%	0.00
MONO		0.0%	0.00
EOS		0.0%	0.00
BASO		0.0%	0.00
META		0.0%	0.00
MYELO		0.0%	0.00
PROM		0.0%	0.00
NRBC		0.0%	0.00
WBC Morphology			
BLAST			
DB			
HSEG			
HYPPOSEG			
HYPONEUT			
LYMPHR			
SMUC			
TOX			
TVAC			

Enhanced SM Workspace Functionality

Run Worksheet

Specimen Worksheet

Run Worksheet

Requested Date /	Test Name	Result (1)	Reference Range (1)	Error Name(s) (1)	Test Comment(s) (1)	Result (2)	Reference Range (2)	Error Name(s) (2)
4/4/2013	4 - CBC							
S A123792 Rouleau, Steve	WBC	4.9	4.8 - 10.8			4.8	4.8 - 10.8	
R A123789 Debby, Smith	RBC	3.67	4.4 - 5.9	L		3.68	4.4 - 5.9	L
R A123790 Lisa, Szetela	HGB	11.49	13.5 - 17.5	L, H&H Failed		11.69	13.5 - 17.5	L, H&H Failed
S A123791 Duval, Cheryl	HCT	31.33	34.9 - 46.9	L, H&H Failed		31.53	34.9 - 46.9	L, H&H Failed
R A123793 Goupil, Benoit	MCV	87.55	81 - 100			87.9	81 - 100	
R A123794 Gosselin, Michelle	MCH	32.11	27 - 34			32.11	27 - 34	
S A123795 Potvin, Pete	MCHC	36.68	32 - 36	H, Investigate for lipemia, cold agglutinin, rouleaux or hemolysis		36.68	32 - 36	H, Investigate for lipemia, cold agglutinin, rouleaux or hemolysis
S A123796 Dione, Janice	RDW	11.8	11.6 - 13.7			11.8	11.6 - 13.7	
R A123797 Leonard, Daniel	PLT	208	150 - 350			208	150 - 350	
R A123798 Zito, Frank	MPV	5.9				5.9		
	PCT	0.124				0.124		
	PDW	19.36				19.36		
	5 - DIFF							
	%N	44.58	45 - 65	L		44.58	45 - 65	L
	%L	38.88	20 - 40			38.88	20 - 40	

Specimen Information

Patient Name: Gosselin, Michelle S
Patient ID: P10006 D
Specimen ID: A123794 P
Operator ID:
Admitting Physician:
Rack: Sequence Number:
Position:
Specimen Comment(s):








- Multiple instances of a specimen analysis are shown in columns rather than rows
 - Visual comparison of results from different runs is easily done

Enhanced SM Workspace Functionality

Run Worksheet

Run Worksheet Run 1					Run 2		
Test Name	Result (1)	Result Date/Time...	Test Instrument...	Erro...	Result (2)	Result Date/Time...	Test Instrument...
WBC	6.2	6/20/2012 3:07:...	Beckman		6.2	6/20/2012 3:08:...	Beckman
RBC	4.19	6/20/2012 3:07:...	Beckman		4.17	6/20/2012 3:08:...	Beckman
HGB	11.2	6/20/2012 3:07:...	Beckman		11.2	6/20/2012 3:08:...	Beckman
HCT	33	6/20/2012 3:07:...	Beckman		33	6/20/2012 3:08:...	Beckman
MCV	85.7	6/20/2012 3:07:...	Beckman		85.7	6/20/2012 3:08:...	Beckman
MCH	26.5	6/20/2012 3:07:...	Beckman		26.4	6/20/2012 3:08:...	Beckman
MCHC	31.2	6/20/2012 3:07:...	Beckman		31.3	6/20/2012 3:08:...	Beckman
PLT	207	6/20/2012 3:07:...	Beckman		208	6/20/2012 3:08:...	Beckman
MPV	10.5	6/20/2012 3:07:...	Beckman		10.3	6/20/2012 3:08:...	Beckman
RDW	11.3	6/20/2012 3:07:...	Beckman		11.3	6/20/2012 3:08:...	Beckman
- DIFF							
DIFF		6/20/2012 3:07:...	Beckman			6/20/2012 3:08:...	Beckman
NE%	58	6/20/2012 3:07:...	Beckman		58	6/20/2012 3:08:...	Beckman
LY%	34.4	6/20/2012 3:07:...	Beckman		34.4	6/20/2012 3:08:...	Beckman
MO%	5.22	6/20/2012 3:07:...	Beckman		5.22	6/20/2012 3:08:...	Beckman

New Actions added

	Verify Run with Cell Counter
	Edit Run with Cell Counter
	Release Run 1/Reject Other Runs
	Release (none)/Reject Other (none)
	Reject Run 1
	Reject (none)
	Rerun (none)

- Data Presentation

- Multiple instances of a specimen analysis are shown in columns rather than rows

- Test Results can be Released on the basis of “Run #”

Enhanced SM Workspace Functionality

Hematology Instrument Images

The screenshot displays the Specimen Management Workspace - HEME1 interface. The 'Images' tab is active, showing a DIFF (2) image and three histograms: PLT Histogram (2), RBC Histogram (2), and etic. The 'Specimen Worksheet' shows a list of specimens for 6/20/2012. The 'Run Worksheet' shows a table of test results for CBC, DIFF, NRBC, and RETIC. The 'Cell Counter' panel shows specimen information and a table of test results for the Hematology Analyzer.

Priority	Specimen ID	Patient Name
	6/20/2012	
	G789457	Thomas,Casper,N
	G789458	David,Gabriel,O
	G789459	Samuel,August,P
	G789460	Henry,Matthew,Q
	G789461	David,Oliver,R
	G789462	Henry,Jack,S
	G789463	Johan,Miles,T
	G789464	Casper,Finn,U

Test Name	Result (1)	Result Date/Tim...	Unit...	Test Instrument I...	Erro...	Result (2)	Result Date/Tim...	Un...
CBC								
HCT	33	6/20/2012 3:07:...	%	Heme1		33	6/20/2012 3:08:...	%
HGB	11.4	6/20/2012 3:07:...	g/dL	Heme1		11.4	6/20/2012 3:08:...	g/c
MCH	26.7	6/20/2012 3:07:...		Heme1		26.7	6/20/2012 3:08:...	
MCHC	31.2	6/20/2012 3:07:...		Heme1		31.2	6/20/2012 3:08:...	
MCV	85.9	6/20/2012 3:07:...		Heme1		85.9	6/20/2012 3:08:...	
MPV	10.5	6/20/2012 3:07:...		Heme1		10.5	6/20/2012 3:08:...	
PLT	223	6/20/2012 3:07:...		Heme1		223	6/20/2012 3:08:...	
RBC	4.19	6/20/2012 3:07:...		Heme1		4.19	6/20/2012 3:08:...	
RDW	11.3	6/20/2012 3:07:...		Heme1		11.3	6/20/2012 3:08:...	
WBC	7.2	6/20/2012 3:07:...	10e...	Heme1		7.2	6/20/2012 3:08:...	10e
DIFF								
BA#	0.031	6/20/2012 3:07:...		Heme1		0.031	6/20/2012 3:08:...	
BA%	0.693	6/20/2012 3:07:...		Heme1		0.693	6/20/2012 3:08:...	
DIFF		6/20/2012 3:07:...		Heme1			6/20/2012 3:08:...	
EO#	0.131	6/20/2012 3:07:...		Heme1		0.131	6/20/2012 3:08:...	
EO%	3.33	6/20/2012 3:07:...		Heme1		3.33	6/20/2012 3:08:...	
LY#	1.35	6/20/2012 3:07:...		Heme1		1.35	6/20/2012 3:08:...	
LY%	34.6	6/20/2012 3:07:...		Heme1		34.6	6/20/2012 3:08:...	
MO#	0.648	6/20/2012 3:07:...		Heme1		0.648	6/20/2012 3:08:...	
MO%	5.24	6/20/2012 3:07:...		Heme1		5.24	6/20/2012 3:08:...	
NE#	5.12	6/20/2012 3:07:...		Heme1		5.12	6/20/2012 3:08:...	
NE%	62	6/20/2012 3:07:...		Heme1		62	6/20/2012 3:08:...	
NRBC								
NRBC#	0	6/20/2012 3:07:...		Heme1		0	6/20/2012 3:08:...	
RETIC								
RET#	0.983	6/20/2012 3:07:...		Heme1		0.983	6/20/2012 3:08:...	
RET%	0.932	6/20/2012 3:07:...		Heme1		0.932	6/20/2012 3:08:...	

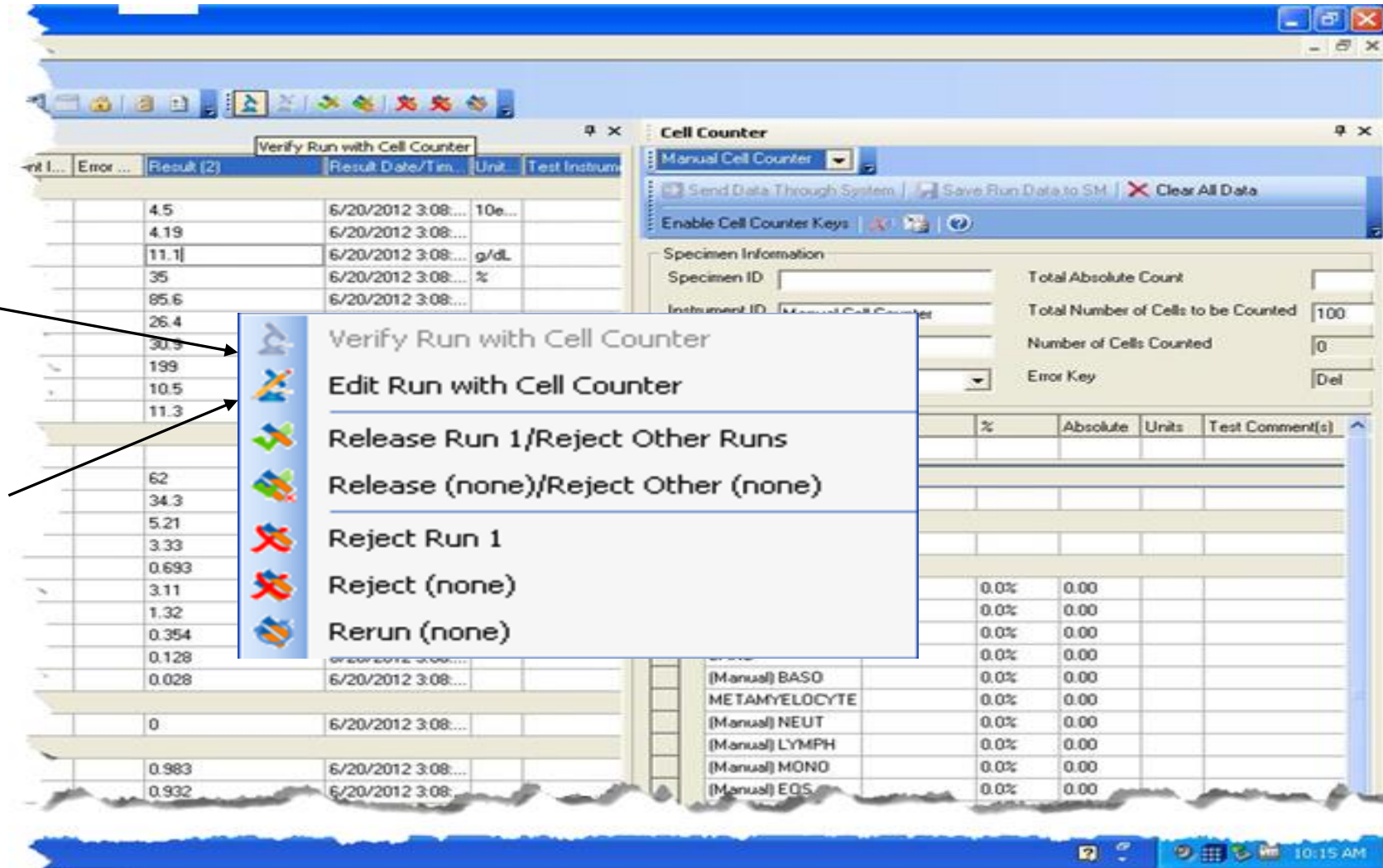
Test Code	Result	%
Hematology Analyzer		
Instrument ID		
Hold for Path Review		
Pathologist Review		
DIFF		
BLAST		0.0%
PROMYELOCYTE		0.0%
MYELOCYTE		0.0%
BAND		0.0%
(Manual) BASO		0.0%
METAMYELOCYTE		0.0%
(Manual) NEUT		0.0%
(Manual) LYMPH		0.0%
(Manual) MONO		0.0%
(Manual) EOS		0.0%
RF&ACTIVE LYMPH		0.0%

Enhanced SM Workspace Functionality

Run Worksheet – New Actions

- New actions have been added to aid hematology workflow

- Verify Run with Cell Counter – perform a manual differential
- Edit Run with Cell Counter – edit a previously performed manual differential now with auto-update of differential absolute totals



Enhanced SM Workspace Functionality

Cell Counter Integration

Run Worksheet

	Test Name	Result (1)	Result Date/Tim...	Unit...	Test Instr...	Erro...	Result (2)	Result Date/Tim...	Unit...	Test Instr...	Erro...	Result (3)	Result Date/Tim...	Unit...	Test Instrument I...
-	CBC														
	WBC	7.2	6/20/2012 3:07:...	10e...	Heme1		7.2	6/20/2012 3:08:...	10e...	Heme1					
	RBC	4.19	6/20/2012 3:07:...		Heme1		4.19	6/20/2012 3:08:...		Heme1					
	HGB	11.4	6/20/2012 3:07:...	g/dL	Heme1		11.4	6/20/2012 3:08:...	g/dL	Heme1					
	HCT	33	6/20/2012 3:07:...	%	Heme1		33	6/20/2012 3:08:...	%	Heme1					
	MCV	85.9	6/20/2012 3:07:...		Heme1		85.9	6/20/2012 3:08:...		Heme1					
	MCH	26.7	6/20/2012 3:07:...		Heme1		26.7	6/20/2012 3:08:...		Heme1					
	MCHC	31.2	6/20/2012 3:07:...		Heme1		31.2	6/20/2012 3:08:...		Heme1					
	PLT	223	6/20/2012 3:07:...		Heme1		223	6/20/2012 3:08:...		Heme1					
	MPV	10.5	6/20/2012 3:07:...		Heme1		10.5	6/20/2012 3:08:...		Heme1					
	RDW	11.3	6/20/2012 3:07:...		Heme1		11.3	6/20/2012 3:08:...		Heme1					
-	DIFF														
	DIFF		6/20/2012 3:07:...		Heme1			6/20/2012 3:08:...		Heme1					
	NE%	62	6/20/2012 3:07:...		Heme1		62	6/20/2012 3:08:...		Heme1		62.0	7/13/2012 12:3...	%	Manual Cell Cou...
▶	LY%	34.6	6/20/2012 3:07:...		Heme1		34.6	6/20/2012 3:08:...		Heme1		32.0	7/13/2012 12:3...	%	Manual Cell Cou...
	MO%	5.24	6/20/2012 3:07:...		Heme1		5.24	6/20/2012 3:08:...		Heme1		3.0	7/13/2012 12:3...	%	Manual Cell Cou...
	EO%	3.33	6/20/2012 3:07:...		Heme1		3.33	6/20/2012 3:08:...		Heme1		3.0	7/13/2012 12:3...	%	Manual Cell Cou...
	BA%	0.693	6/20/2012 3:07:...		Heme1		0.693	6/20/2012 3:08:...		Heme1		0.0	7/13/2012 12:3...	%	Manual Cell Cou...
	NE#	5.12	6/20/2012 3:07:...		Heme1		5.12	6/20/2012 3:08:...		Heme1		4.46	7/13/2012 12:3...	%	Manual Cell Cou...
	LY#	1.35	6/20/2012 3:07:...		Heme1		1.35	6/20/2012 3:08:...		Heme1		2.30	7/13/2012 12:3...	%	Manual Cell Cou...
	MO#	0.648	6/20/2012 3:07:...		Heme1		0.648	6/20/2012 3:08:...		Heme1		0.22	7/13/2012 12:3...	%	Manual Cell Cou...
	EO#	0.131	6/20/2012 3:07:...		Heme1		0.131	6/20/2012 3:08:...		Heme1		0.22	7/13/2012 12:3...	%	Manual Cell Cou...
	BA#	0.031	6/20/2012 3:07:...		Heme1		0.031	6/20/2012 3:08:...		Heme1		0.00	7/13/2012 12:3...	%	Manual Cell Cou...
-	NRBC														
	NRBC#	0	6/20/2012 3:07:...		Heme1		0	6/20/2012 3:08:...		Heme1					
-	RETIC														

- Verify Run with Cell Counter
- Edit Run with Cell Counter
- Release Run 3/Reject Other Runs
- Release DIFF/Reject Other DIFF
- Reject Run 3
- Reject DIFF
- Rerun DIFF
- Order New Tests... Ctrl+N
- Order Rerun/Reflex...

Enhanced SM Workspace Functionality

Cell Counter Integration

Run Worksheet

Test Na...	Result (1)	Result Date/Tim...	Unit...	Test Instr...	Error ...	Result (2)	Result Date/Tim...	Unit...	Test Instr...	Error ...	Result (3)	Result Date/Tim...	Unit...	Test Instr...	Err
CBC															
WBC	4.5	6/20/2012 3:07:...	10e...	HEME1		4.5	6/20/2012 3:08:...	10e...	HEME1						
RBC	4.19	6/20/2012 3:07:...		HEME1		4.19	6/20/2012 3:08:...		HEME1						
HGB	11.1	6/20/2012 3:07:...	g/dL	HEME1		11.1	6/20/2012 3:08:...	g/dL	HEME1						
HCT	35	6/20/2012 3:07:...	%	HEME1		35	6/20/2012 3:08:...	%	HEME1						
MCV	85.6	6/20/2012 3:07:...		HEME1		85.6	6/20/2012 3:08:...		HEME1						
MCH	26.4	6/20/2012 3:07:...		HEME1		26.4	6/20/2012 3:08:...		HEME1						
MCHC	30.9	6/20/2012 3:07:...		HEME1		30.9	6/20/2012 3:08:...		HEME1						
PLT	199	6/20/2012 3:07:...		HEME1		199	6/20/2012 3:08:...		HEME1						
MPV	10.5	6/20/2012 3:07:...		HEME1		10.5	6/20/2012 3:08:...		HEME1						
RDW	11.3	6/20/2012 3:07:...		HEME1		11.3	6/20/2012 3:08:...		HEME1						
DIFF															
DIFF		6/20/2012 3:07:...		HEME1			6/20/2012 3:08:...		HEME1						
NE%	62	6/20/2012 3:07:...		HEME1		62	6/20/2012 3:08:...		HEME1		62.0	7/12/2012 12:1...	%	Manual C...	
LY%	34.3	6/20/2012 3:07:...		HEME1		34.3	6/20/2012 3:08:...		HEME1		34.0	7/12/2012 12:1...	%	Manual C...	
MO%	5.21	6/20/2012 3:07:...		HEME1		5.21	6/20/2012 3:08:...		HEME1		2.0	7/12/2012 12:1...	%	Manual C...	
EO%	3.33	6/20/2012 3:07:...		HEME1		3.33	6/20/2012 3:08:...		HEME1		1.0	7/12/2012 12:1...	%	Manual C...	
BA%	0.693	6/20/2012 3:07:...		HEME1		0.693	6/20/2012 3:08:...		HEME1		0.0	7/12/2012 12:1...	%	Manual C...	
NE#	3.11	6/20/2012 3:07:...		HEME1		3.11	6/20/2012 3:08:...		HEME1		2.79	7/12/2012 12:1...		Manual C...	
LY#	1.32	6/20/2012 3:07:...		HEME1		1.32	6/20/2012 3:08:...		HEME1		1.53	7/12/2012 12:1...		Manual C...	
MO#	0.354	6/20/2012 3:07:...		HEME1		0.354	6/20/2012 3:08:...		HEME1		0.09	7/12/2012 12:1...		Manual C...	
EO#	0.128	6/20/2012 3:07:...		HEME1		0.128	6/20/2012 3:08:...		HEME1		0.05	7/12/2012 12:11:48 PM		Manual C...	
BA#	0.028	6/20/2012 3:07:...		HEME1		0.028	6/20/2012 3:08:...		HEME1		0.00	7/12/2012 12:1...		Manual C...	
META...											0.05	7/12/2012 12:1...			
META...											1.0	7/12/2012 12:1...	%		

Enhanced SM Workspace Functionality

Enhanced Results Release

Run Worksheet

Test Na...	Result (1)	Result Date/Tim...	Unit...	Test Instr...	Error ...	Result (2)	Result Date/Tim...	Unit...	Test Instr...	Error ...	Result (3)	Result Date/Tim...	Unit...	Test Instr...
- CBC														
WBC	4.5	6/20/2012 3:07...	10e...	HEME1		4.5	6/20/2012 3:08...	10e...	HEME1					
RBC	4.19	6/20/2012 3:07...		HEME1		4.19								
HGB	11.1	6/20/2012 3:07...	g/dL	HEME1		11.1								
HCT	35	6/20/2012 3:07...	%	HEME1		35								
MCV	85.6	6/20/2012 3:07...		HEME1		85.6								
MCH	26.4	6/20/2012 3:07...		HEME1		26.4								
MCHC	30.9	6/20/2012 3:07...		HEME1		30.9								
PLT	199	6/20/2012 3:07...		HEME1		199								
MPV	10.5	6/20/2012 3:07...		HEME1		10.5								
RDW	11.3	6/20/2012 3:07...		HEME1		11.3								
- DIFF														
DIFF		6/20/2012 3:07...		HEME1										
NE%	62	6/20/2012 3:07...		HEME1		62								
LY%	34.3	6/20/2012 3:07...		HEME1		34.3								
MO%	5.21	6/20/2012 3:07...		HEME1		5.21								
EO%	3.33	6/20/2012 3:07...		HEME1		3.33								
BA%	0.693	6/20/2012 3:07...		HEME1		0.693								
NE#	3.11	6/20/2012 3:07...		HEME1		3.11								
LY#	1.32	6/20/2012 3:07...		HEME1		1.32								
MO#	0.354	6/20/2012 3:07...		HEME1		0.354								
EO#	0.128	6/20/2012 3:07...		HEME1		0.128								
BA#	0.028	6/20/2012 3:07...		HEME1		0.028								
META...														
META...														

Run Worksheet

Test Name	Result (1)	Result Date/Time...	Test Instrument...	Erro...	Result (2)	Result Date/Time...
- CBC						
WBC	4.5	6/20/2012 3:07...			4.5	6/20/2012 3:08...
RBC	4.19	6/20/2012 3:07...			4.19	6/20/2012 3:08...
HGB	11.1	6/20/2012 3:07...			11.1	6/20/2012 3:08...
HCT	35	6/20/2012 3:07...			35	6/20/2012 3:08...
MCV	85.6	6/20/2012 3:07...			85.6	6/20/2012 3:08...
MCH	26.4	6/20/2012 3:07...			26.4	6/20/2012 3:08...
MCHC	30.9	6/20/2012 3:07...			30.9	6/20/2012 3:08...
PLT	199	6/20/2012 3:07...			199	6/20/2012 3:08...
MPV	10.5	6/20/2012 3:07...			10.5	6/20/2012 3:08...
RDW	11.3	6/20/2012 3:07...			11.3	6/20/2012 3:08...
- DIFF						
DIFF		6/20/2012 3:08...				6/20/2012 3:08...
NE%	62	6/20/2012 3:08...			62	6/20/2012 3:08...
LY%	34.3	6/20/2012 3:08...			34.3	6/20/2012 3:08...
MO%	5.21	6/20/2012 3:08...			5.21	6/20/2012 3:08...

Context Menu 1 (Left):

- Verify Run with Cell Counter
- Edit Run with Cell Counter
- Release Run 2/Reject Other Runs**
- Release CBC/Reject Other CBC
- Reject Run 2
- Reject CBC
- Rerun CBC
- Order New Tests... Ctrl+N
- Order Rerun/Reflex...
- Release
- Send to Host
- Reject Result
- Insert Coded Entry...
- Print Barcode
- Print Report
- Print...

Context Menu 2 (Right):

- Verify Run with Cell Counter
- Edit Run with Cell Counter
- Release Run 3/Reject Other Runs
- Release CBC/Reject Other CBC**
- Reject Run 3
- Reject CBC
- Rerun CBC
- Order New Tests... Ctrl+N
- Order Rerun/Reflex...
- Release for Second Level Review
- Release
- Send to Host

Enhanced SM Workspace Functionality

Enhanced Results Release

Run Worksheet															
	Test Na...	Result (1)	Result Date/Tim...	Unit...	Test Instr...	Error ...	Result (2)	Result Date/Tim...	Unit...	Test Instr...	Error ...	Result (3)	Result Date/Tim...	Unit...	Test Instr...
▶	CBC														
	WBC	4.5	6/20/2012 3:07:...	10e...	HEME1		4.5	6/20/2012 3:08:...	10e...	HEME1					
	RBC	4.19	6/20/2012 3:07:...		HEME1		4.19	6/20/2012 3:08:...		HEME1					
	HGB	11.1	6/20/2012 3:07:...	g/dL	HEME1		11.1	6/20/2012 3:08:...	g/dL	HEME1					
	HCT	35	6/20/2012 3:07:...	%	HEME1		35	6/20/2012 3:08:...	%	HEME1					
	MCV	85.6	6/20/2012 3:07:...		HEME1		85.6	6/20/2012 3:08:...		HEME1					
	MCH	26.4	6/20/2012 3:07:...		HEME1		26.4	6/20/2012 3:08:...		HEME1					
	MCHC	30.9	6/20/2012 3:07:...		HEME1		30.9	6/20/2012 3:08:...		HEME1					
	PLT	199	6/20/2012 3:07:...		HEME1		199	6/20/2012 3:08:...		HEME1					
	MPV	10.5	6/20/2012 3:07:...		HEME1		10.5	6/20/2012 3:08:...		HEME1					
	RDW	11.3	6/20/2012 3:07:...		HEME1		11.3	6/20/2012 3:08:...		HEME1					
▢	DIFF														
	DIFF		6/20/2012 3:07:...		HEME1			6/20/2012 3:08:...		HEME1					
	NE%	62	6/20/2012 3:07:...		HEME1		62	6/20/2012 3:08:...		HEME1		62.0	7/12/2012 12:1...	%	Manual C...
	LY%	34.3	6/20/2012 3:07:...		HEME1		34.3	6/20/2012 3:08:...		HEME1		34.0	7/12/2012 12:1...	%	Manual C...
	MO%	5.24	6/20/2012 3:07:...		HEME1		5.24	6/20/2012 3:08:...		HEME1		2.0	7/12/2012 12:1...	%	Manual C...
	EO%	3.33	6/20/2012 3:07:...		HEME1		3.33	6/20/2012 3:08:...		HEME1		1.0	7/12/2012 12:1...	%	Manual C...
	BA%	0.693	6/20/2012 3:07:...		HEME1		0.693	6/20/2012 3:08:...		HEME1		0.0	7/12/2012 12:1...	%	Manual C...
	NE#	3.14	6/20/2012 3:07:...		HEME1		3.14	6/20/2012 3:08:...		HEME1		2.79	7/12/2012 12:1...		Manual C...
	LY#	1.32	6/20/2012 3:07:...		HEME1		1.32	6/20/2012 3:08:...		HEME1		1.53	7/12/2012 12:1...		Manual C...
	MO#	0.354	6/20/2012 3:07:...		HEME1		0.354	6/20/2012 3:08:...		HEME1		0.09	7/12/2012 12:1...		Manual C...
	EO#	0.128	6/20/2012 3:07:...		HEME1		0.128	6/20/2012 3:08:...		HEME1		0.05	7/12/2012 12:1...		Manual C...
	BA#	0.028	6/20/2012 3:07:...		HEME1		0.028	6/20/2012 3:08:...		HEME1		0.00	7/12/2012 12:1...		Manual C...
	META...											0.05	7/12/2012 12:1...		
	META...											1.0	7/12/2012 12:1...	%	

Multiple Level Result Review

The screenshot displays two main windows from a laboratory information system. The top window, titled "Specimen Worksheet", shows a table of specimens with columns for Specimen ID, Patient Name, Priority, and Specimen Completion Status. The bottom window, titled "Run Worksheet", shows a table of test results with columns for Test Name, Result (1), Result Date/Time, Test Instrument, Error, Result (2), Result Date/Time, Test Instrument, and Error. A context menu is open over the CBC test results, with the option "Release for Second Level Review" highlighted.

Specimen ID	Patient Name	Priority	Specimen Completion Status
6/20/2012			
G789456	Rhys,Johan,M		Tests Held
G789457	Thomas,Casper,N		Tests Held
G789458	David,Gabriel,O		Tests Held
G789459	Samuel,August,P		Tests Held
G789460	Henry,Matthew,Q		Tests Held
G789461	David,Oliver,R		Tests Held
G789462	Henry,Jack,S		Tests Held
G789463	Johan,Miles,T		Tests Held
G789464	Casper,Finn,U		Tests Held

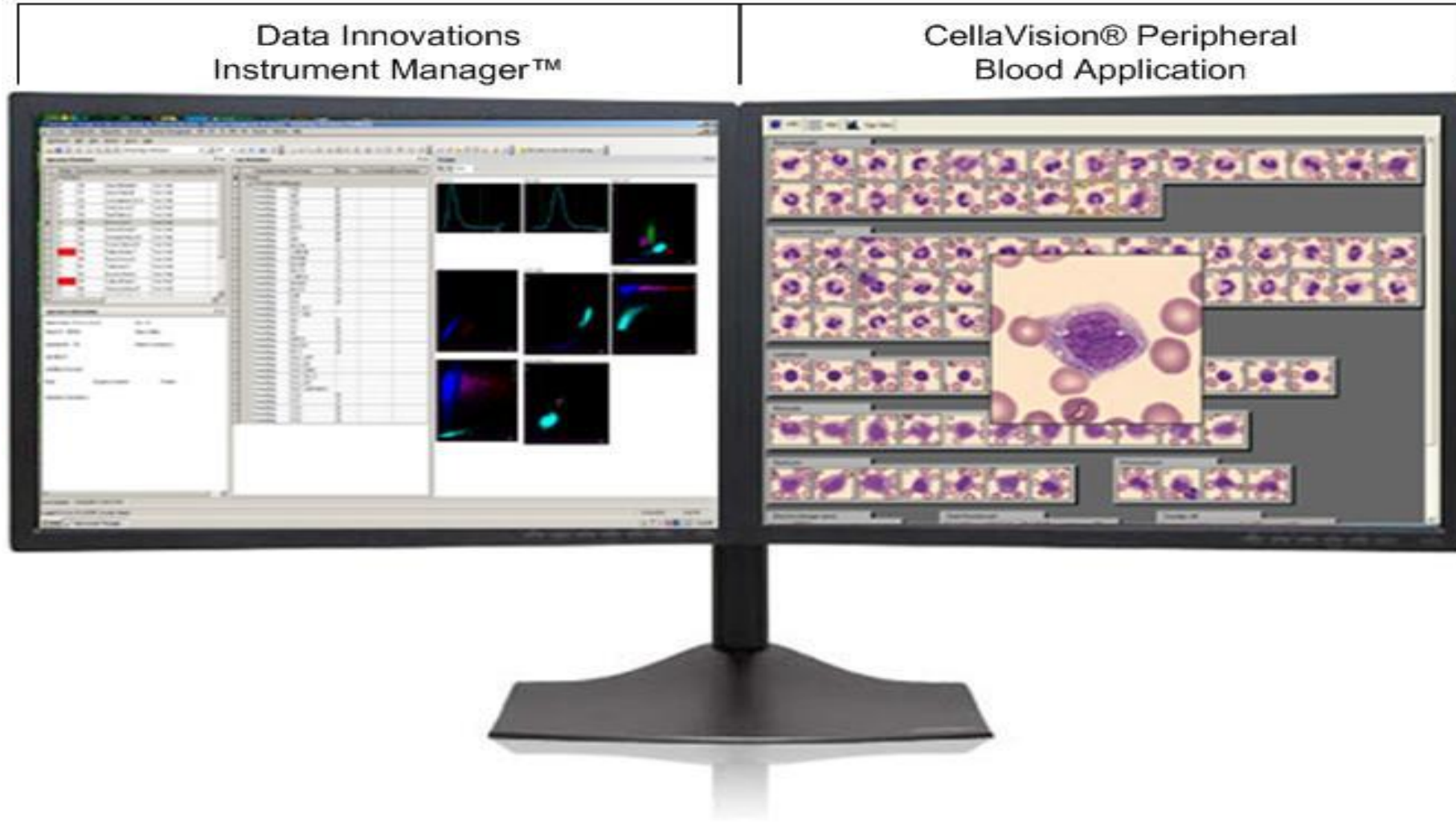
Test Name	Result (1)	Result Date/Time...	Test Instrument...	Erro...	Result (2)	Result Date/Time...	Test Instrument...	Erro...
CBC								
WBC	4.5	6/20/2012 3:07:...	Beckman		4.5	6/20/2012 3:07:...	Beckman	
RBC	4.19	6/20/2012 3:07:...	Beckman		4.19	6/20/2012 3:07:...	Beckman	
HGB	11.1	6/20/2012 3:07:...	Beckman		11.1	6/20/2012 3:07:...	Beckman	
HCT	35	6/20/2012 3:07:...	Beckman		35	6/20/2012 3:07:...	Beckman	
MCV	85.6	6/20/2012 3:07:...	Beckman		85.6	6/20/2012 3:07:...	Beckman	
MCH	26.4	6/20/2012 3:07:...	Beckman		26.4	6/20/2012 3:07:...	Beckman	
MCHC	30.9	6/20/2012 3:07:...	Beckman		30.9	6/20/2012 3:07:...	Beckman	
PLT	199	6/20/2012 3:07:...	Beckman		199	6/20/2012 3:07:...	Beckman	
MPV	10.5	6/20/2012 3:07:...	Beckman		10.5	6/20/2012 3:07:...	Beckman	
RDW	11.3	6/20/2012 3:07:...	Beckman		11.3	6/20/2012 3:07:...	Beckman	
DIFF								
DIFF		6/20/2012 3:07:...	Beckman			6/20/2012 3:07:...	Beckman	
NE%	62	6/20/2012 3:07:...	Beckman		62	6/20/2012 3:07:...	Beckman	

- Results can be released for *second level review* before being released to the LIS
- User Security Tie-In
- Rules can be configured to require second level review for certain test/result pairs if desired

CellaVision™ Integration

Tight integration for automated cell morphology

‘Paperless’ Slide Review / Pathologist Review Workstation



Agenda

1 Next Generation Hematology Workcell

2 Hematology Workcell Demonstration

3 Questions

Free Upgrades to Latest Release of Instrument Manager

- Further information and/or free upgrade
 - northamerica-sales@datainnovations.com
 - Tel: 802-658-2850
- If you have questions regarding support
 - northamerica-support@datainnovations.com
 - Tel: 802-658-1955

Hematology Autoverification Customer Success Story

www.datainnovations.com



Vancouver General Hospital, an 800 bed facility, achieved 95% Autoverification in Hematology and reduced turnaround time by 34% using Instrument Manager.

Agenda

1 Next Generation Hematology Workcell

2 Hematology Workcell Demonstration

3 Questions

Questions?

Thank you for your time!