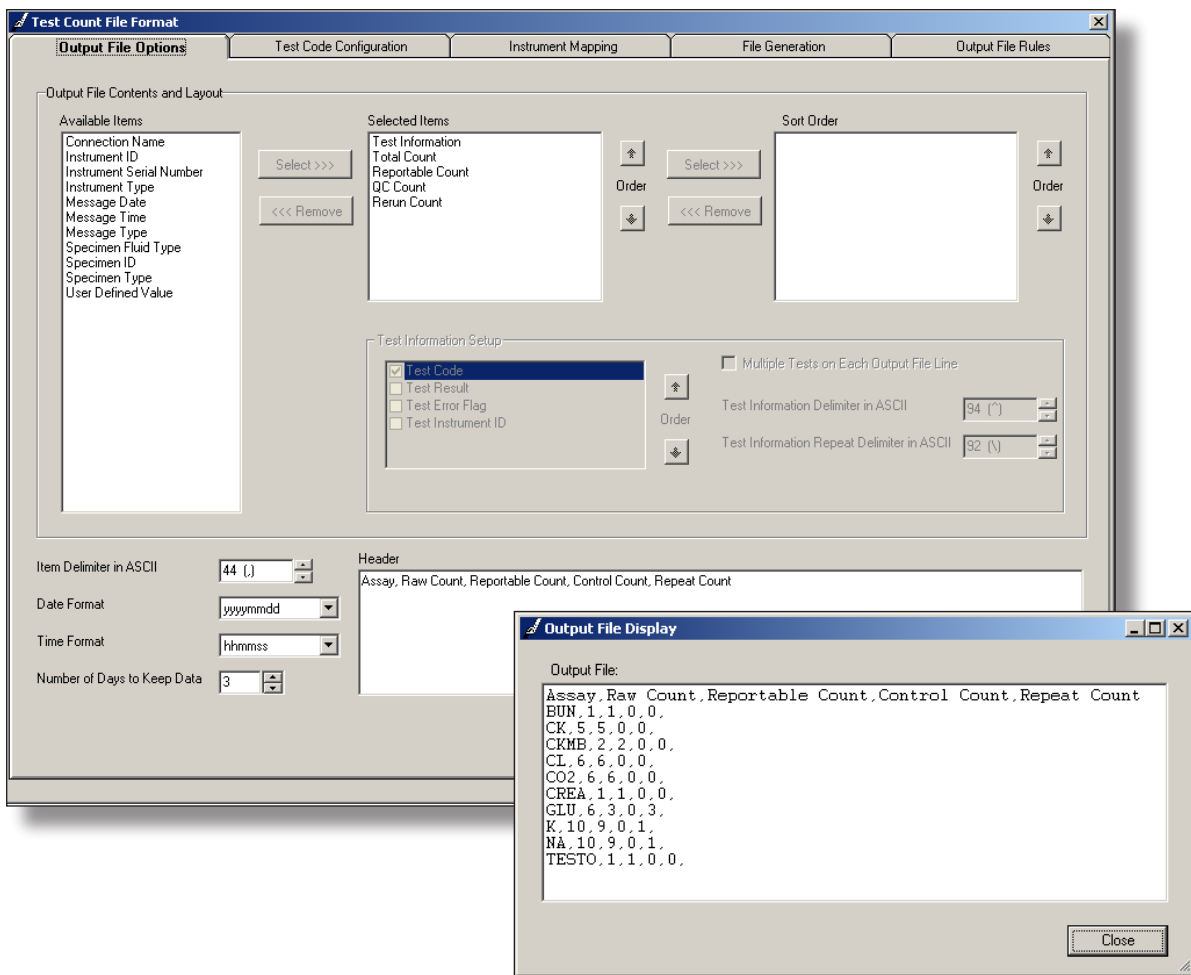


Data Collection enables users to gather data from one or more connections within Instrument Manager™. User-defined rules enable users to specify which data is collected, how it is tabulated and how the report is formatted. The report can be stored in an output file or emailed to specified individuals. There are both manual and automatic options for generation and delivery of the report. This Instrument Manager option enables true electronic cost-per-reportable billing and just-in-time inventory.



Data Innovations offers the most comprehensive Middleware system in the market to manage laboratory operations, including pre-analytical, analytical, and post-analytical sample processing and non clinical tasks such as equipment maintenance and specimen archiving. Instrument Manager™ (IM), the Gold Standard in Middleware, is available independent of instrument or LIS vendor, laboratory department, and clinical discipline.

DATA INNOVATIONS, INC.®
 Phone: (802) 658-1955
 Fax: (802) 658-2782
 Email: sales@datainnovations.com

DATA INNOVATIONS EUROPE
 Phone: 32 (0)2 332 24 13
 Fax: 32 (0)2 376 43 84
 Email: europe-sales@datainnovations.com

DATA INNOVATIONS ASIA
 Phone: (852) 2398 3182
 Fax: (852) 2398 8667
 Email: asia-sales@datainnovations.com

DATA INNOVATIONS LATIN AMERICA
 Phone: 55-11-3801-3283
 Fax: 55-11-3871-9592
 Email: latinamerica-sales@datainnovations.com

Fast Facts: Data Collection Data Elements...

- Connection Name
- Instrument ID
- Instrument Serial #
- Instrument Type
- Message Date
- Message Time
- Message Type
- QC Count
- Reportable Count
- Rerun Count
- Specimen Fluid Type
- Specimen ID
- Specimen Type
- Test Information
- Total Count
- User Defined Value