

LQM - TCT

TEMPERATURE CONTROL



Laboratories work with certain instruments that require temperature control, and it is sometimes necessary to control different temperatures within different areas of an instrument. To do this, the area in question must be fitted with a temperature probe, which, in turn, must be connected to a workstation via one or more special converter boxes.

TCT is a temperature control software that allows laboratories complete control of the temperatures in their refrigerators, ovens and measurement instruments. This allows them to ensure that temperatures remain constant, and that perishable products, for example, will be stored properly, or that a particular chemical or biological process will be performed under the required conditions.

TCT uses a temperature logger to scan the probes connected to the converter box it is responsible for at regular intervals.

It then stores the temperature readings in a database in two different forms:

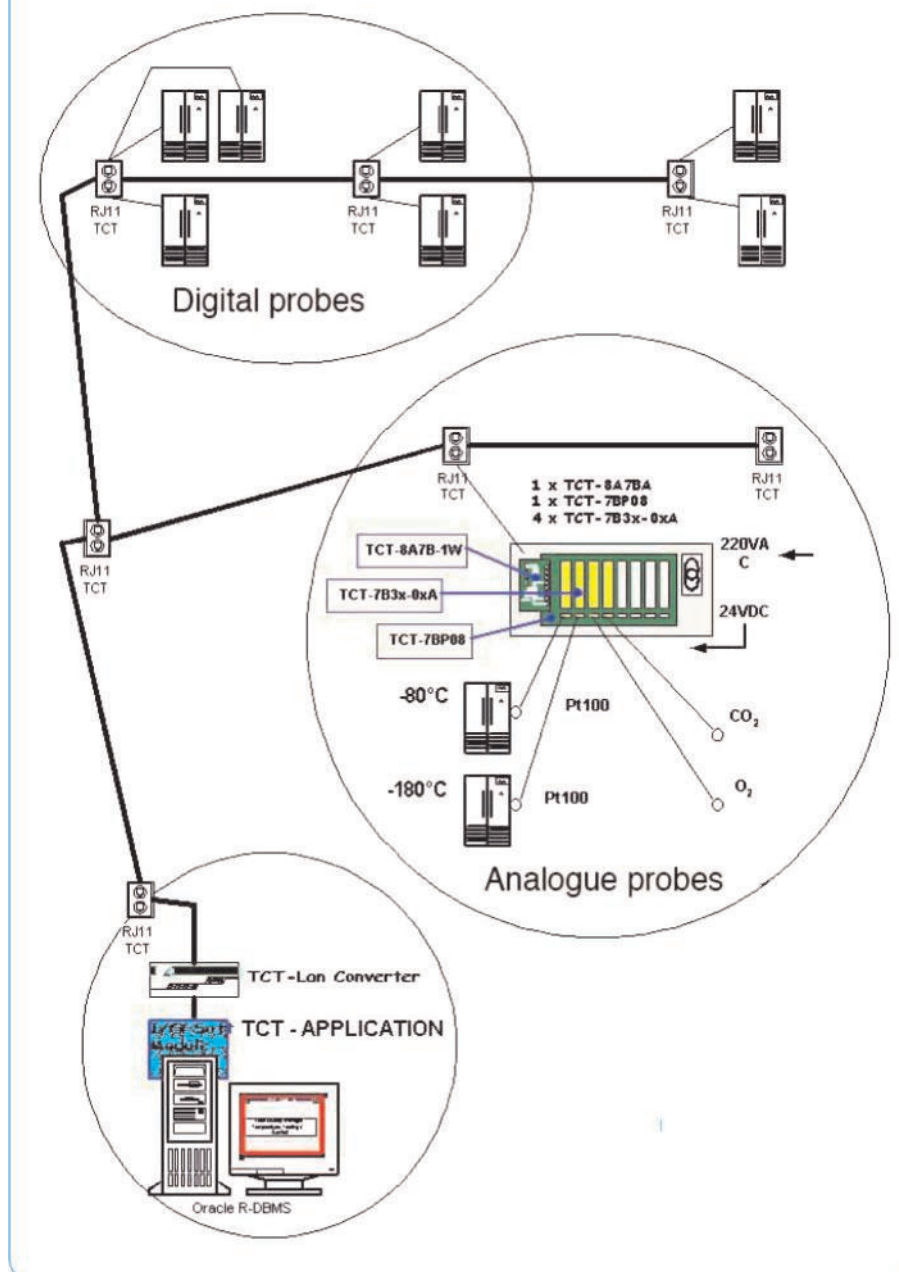
- as instantaneous readings which can be viewed in real time at any of workstations connected to the network;
- as logged readings stored in instrument temperature logbooks which can be consulted at any moment from any workstation.

When the software detects a problem – for example, an instantaneous reading that exceeds the established limits, or a probe that is no longer providing regular readings – it triggers one or more alerts for the instruments concerned.

These alerts generate a problem, or a series of problems, in the problem management software, which, in turn, notifies the relevant staff member or members through a beep, telephone call, e-mail, fax, etc.

Only qualified personnel are authorised to consult temperature readings, and access rights are managed from within the administration software.

Example of configuration



The person or persons notified are thus alerted of the existence of a problem, allowing them to implement the appropriate corrective actions prescribed by the applicable procedures.

These corrective actions are recorded, allowing full traceability of events.

LQM - TCT

TEMPERATURE CONTROL



The TCT software package consists of several programs which work in conjunction at one or more workstations:

Lucifer

Logs readings. It is permanently active at all the workstations connected to the hardware device, recording the temperature readings provided by the different probes, and including them in the database;

Mercure

Detects temperature variances and is permanently active at the database server. It detects unacceptable readings and probes that are not providing readings, and generates problems to be resolved by the problem management software. It also records readings in the temperature logbooks;

Vulcain

Allows users to view current temperature readings for the instruments being monitored and to access temperature logs at any time;

Hélios

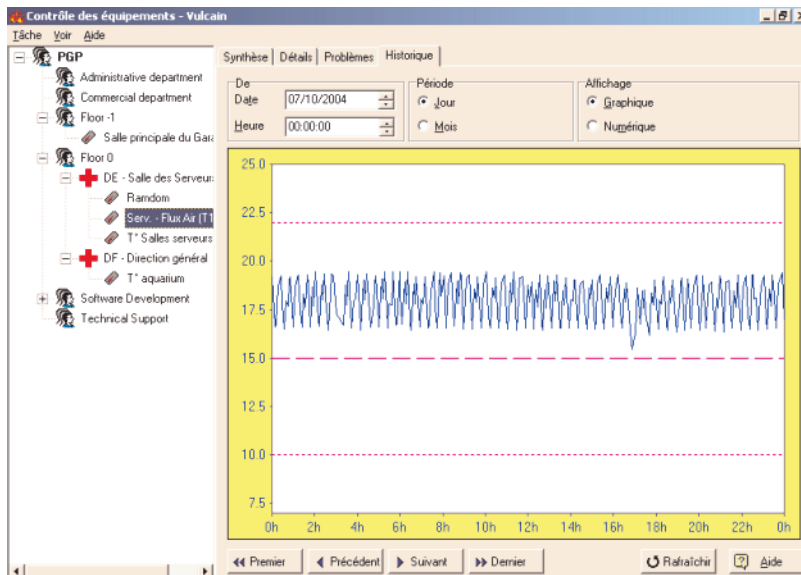
Allows for the manual input of temperatures, and simulations;

Cerbère

Manages access rights;

Gabriel

Manages problems. Sends alert notifications to relevant staff members.



Équipement	Mesure	Alerte	A	Problème	De
Salle principale du Garage (T3)	24.5		25/10/2004 11:37:10	Température inconn.	25/10/2004
Random		Température inconn.	25/10/2004 11:27:24	Température inconn.	18/06/2004
Serv. - Flux Air (T1)	16.72		25/10/2004 11:37:25	Température inconn.	25/10/2004
T° Salles serveurs (T2)	20.49		25/10/2004 11:37:25	Température inconn.	25/10/2004
T° aquarium		Température inconn.	25/10/2004 11:33:24	Température inconn.	09/12/2004

TCT works in a network, and an infinite number of temperature loggers can be connected to an infinite number of workstations.

In addition, all the databases can be consulted from any workstation that has access to the Oracle® database.

A simple plug-in can be added to allow users to obtain a simplified list of temperatures at any moment with the help of a simple web browser like Microsoft® Internet Explorer.

Data Innovations Europe- P.G.P.
Avenue Jacques Brel, 34
1200 Bruxelles
Belgium
Tel: +32 2 770 62 22
Fax: +32 2 775 91 96
E-mail: europe-sales@datainnovations.com

SDLM (P.G.P. in France)
Tour Égée
9-11 Allée de l'Arche de la Défense
92761 Courbevoie Cedex
Tel: +33 1 76 63 74 20
Fax: +33 2 97 57 75 72
E-mail: ventes-france@datainnovations.com

PGP (UK) Ltd.
Davidson House
Upper St John Street
Lichfield WS 14 9DU
Tel: +44 1543 410 996
Fax: +44 1543 410 997
E-mail: sales@pgp.co.uk